

EJB

CBD

(S

CBD

)



gun-young_lee@hp.com



Agenda

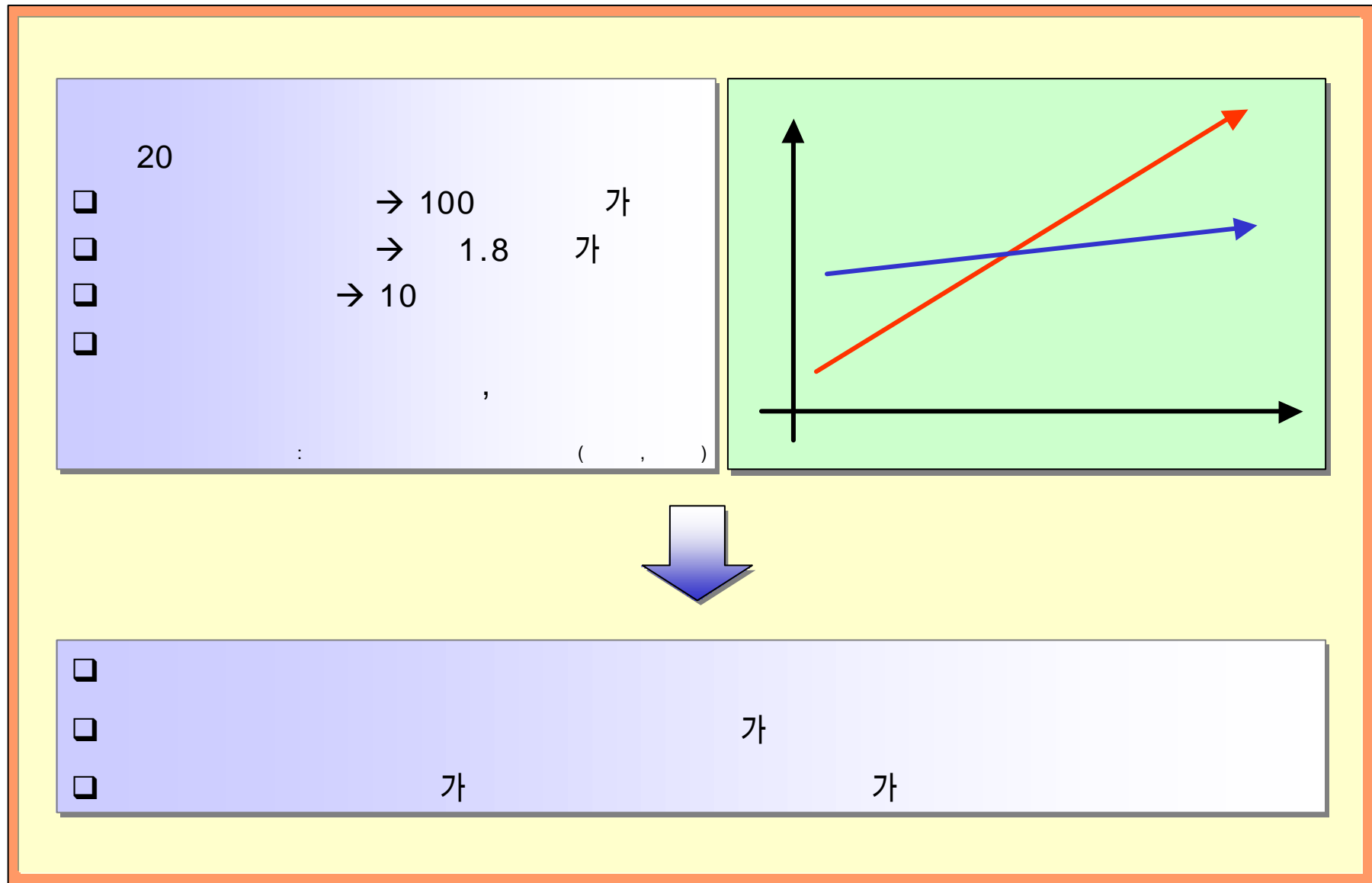
CBD

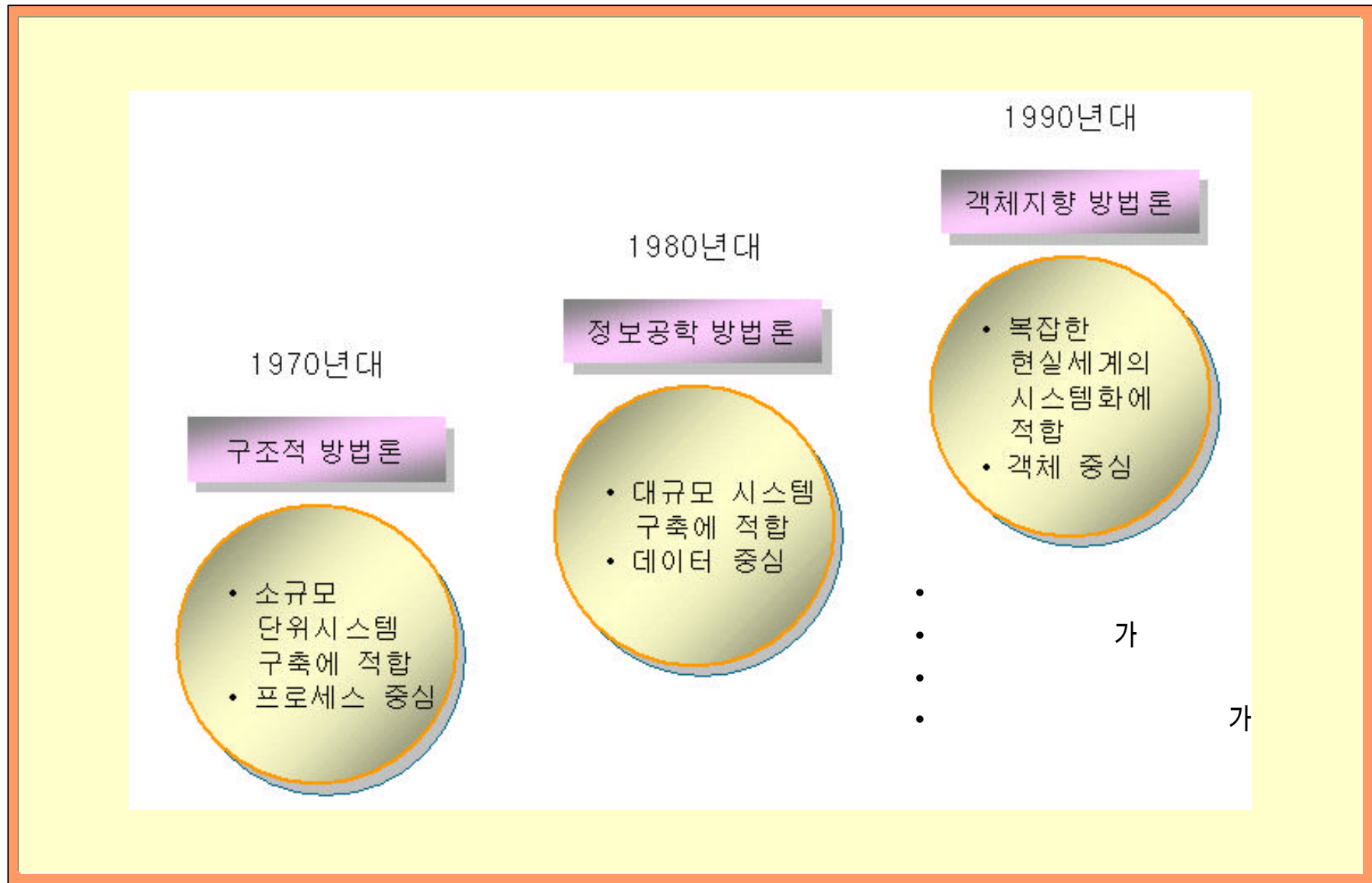
HP CBD

CBD

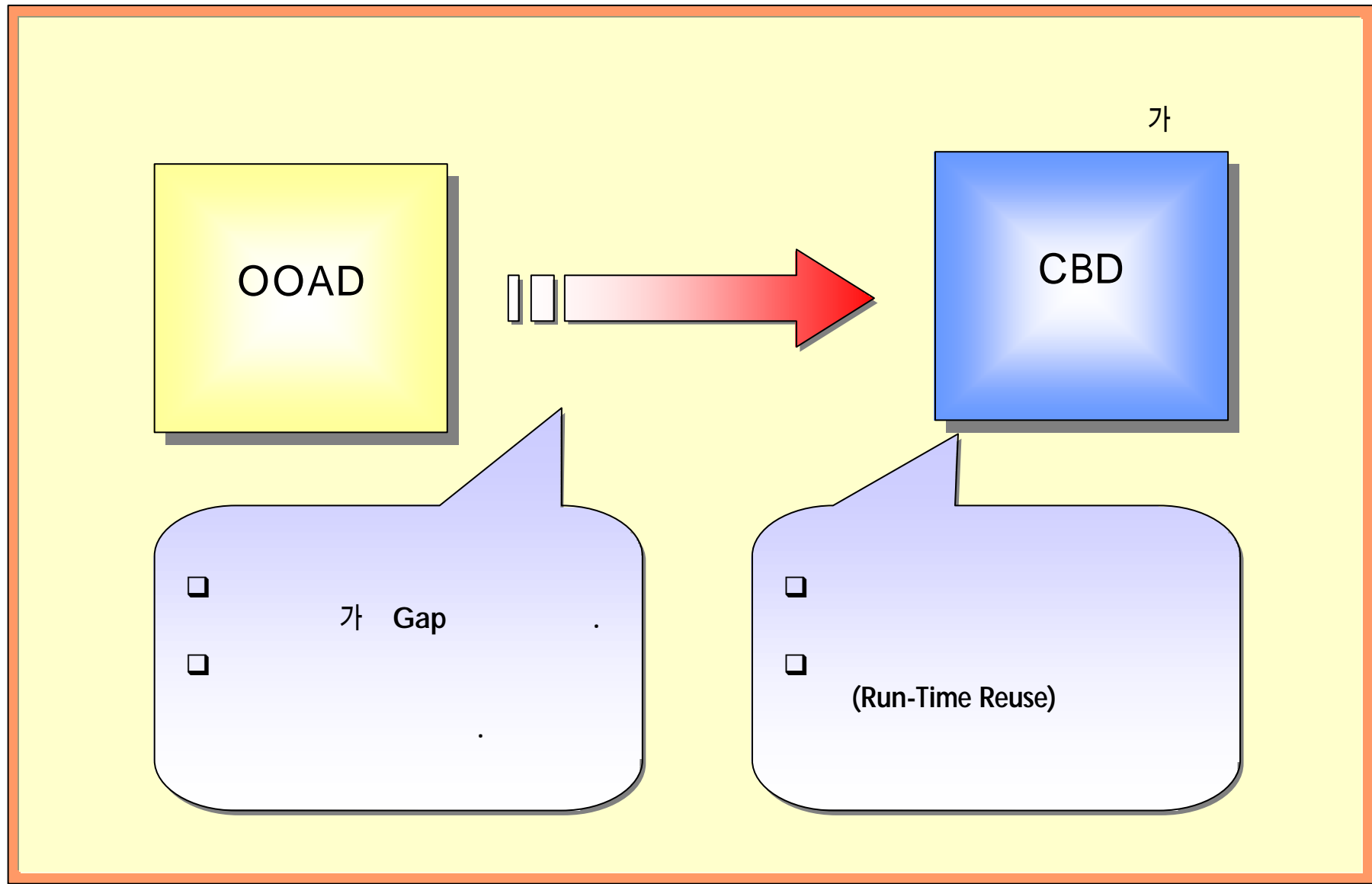
CBD

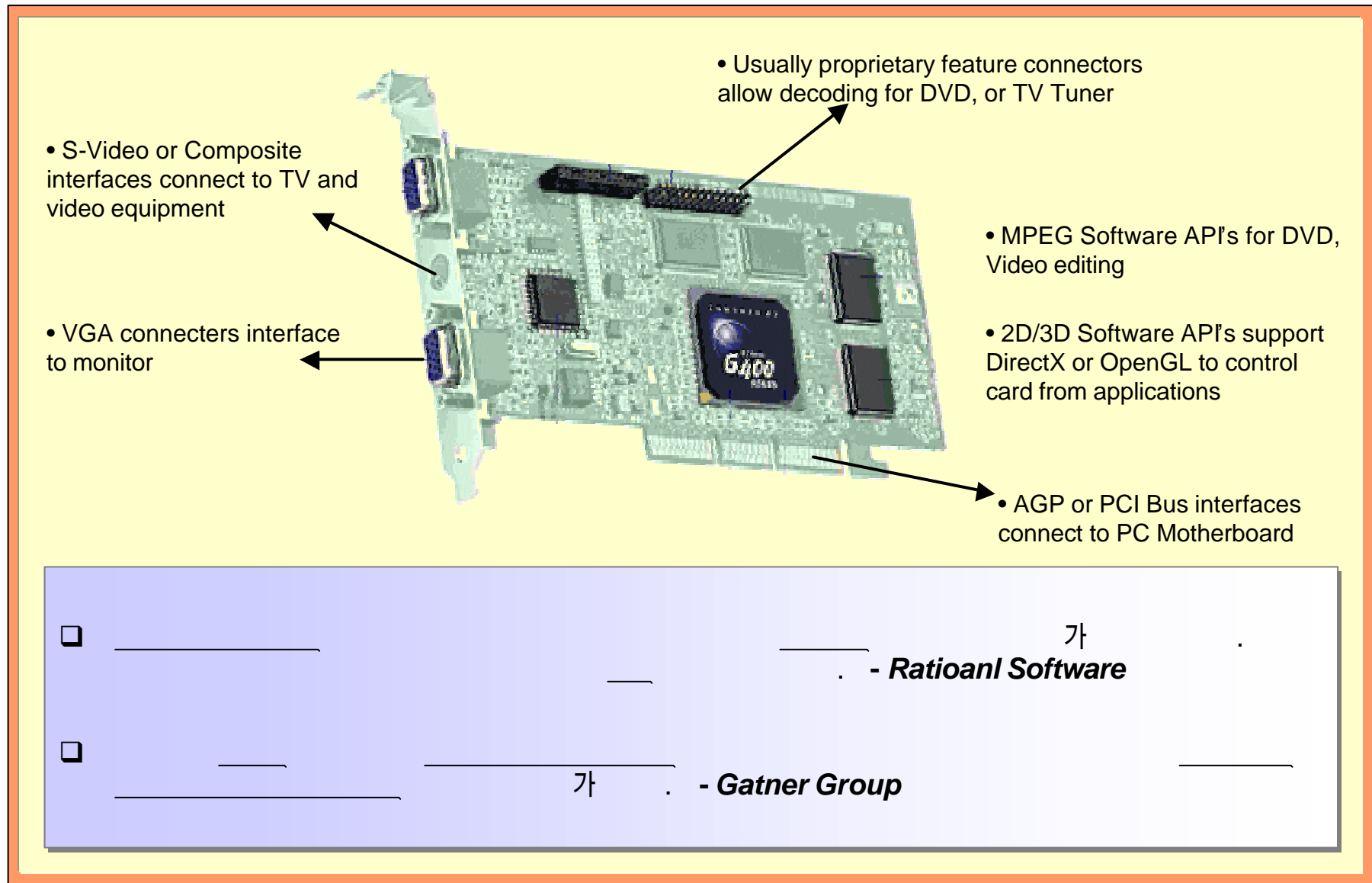


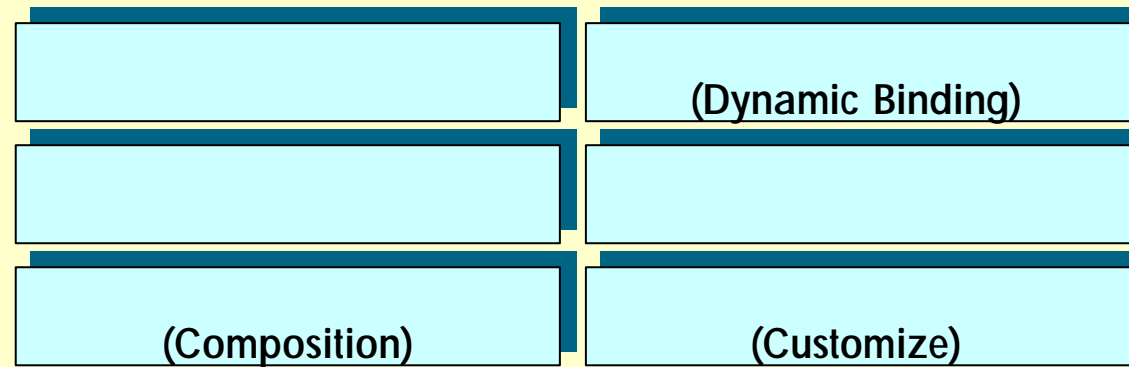




CBD







Spec.

(&)

, .

.

가

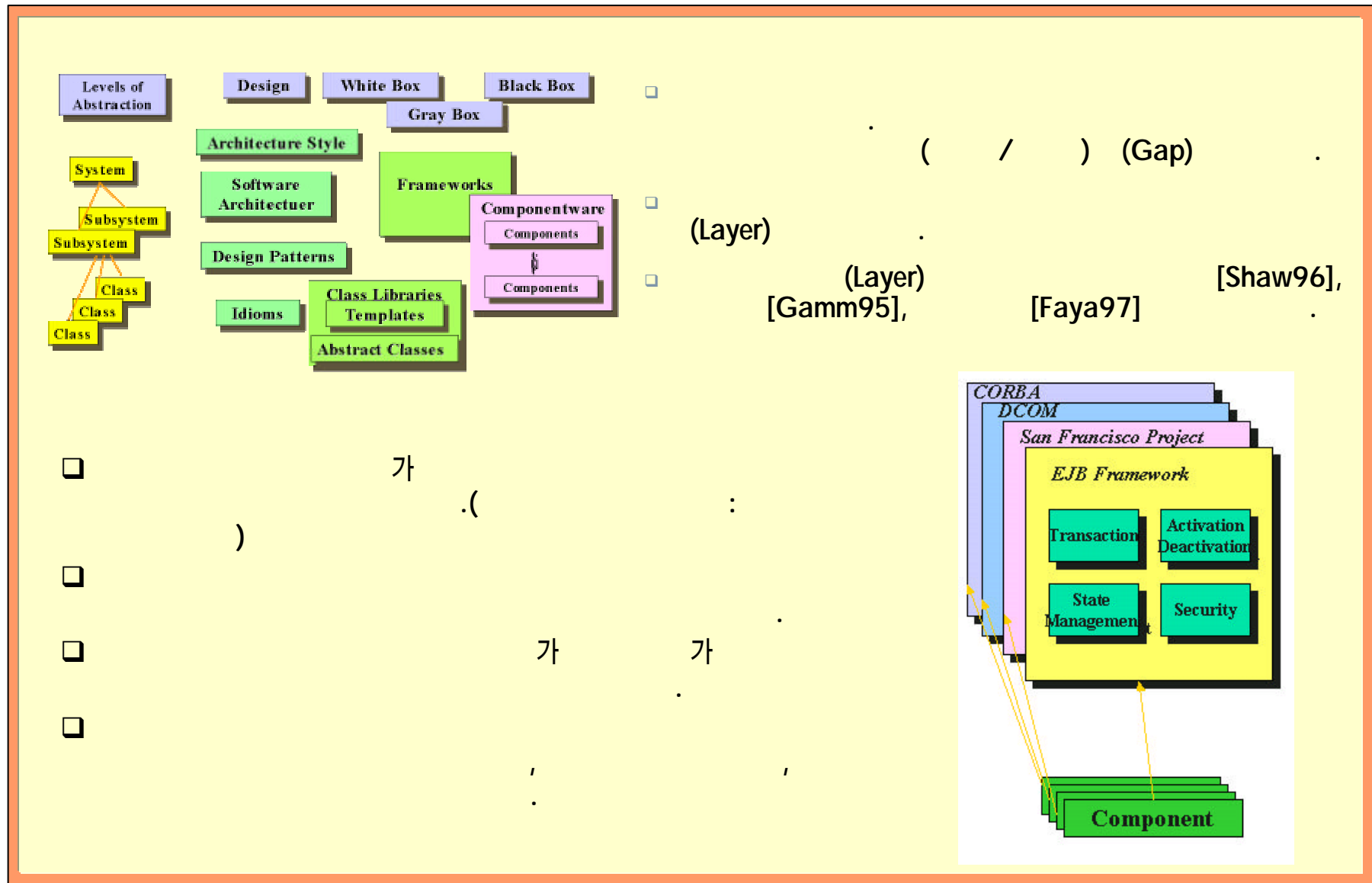
가

.

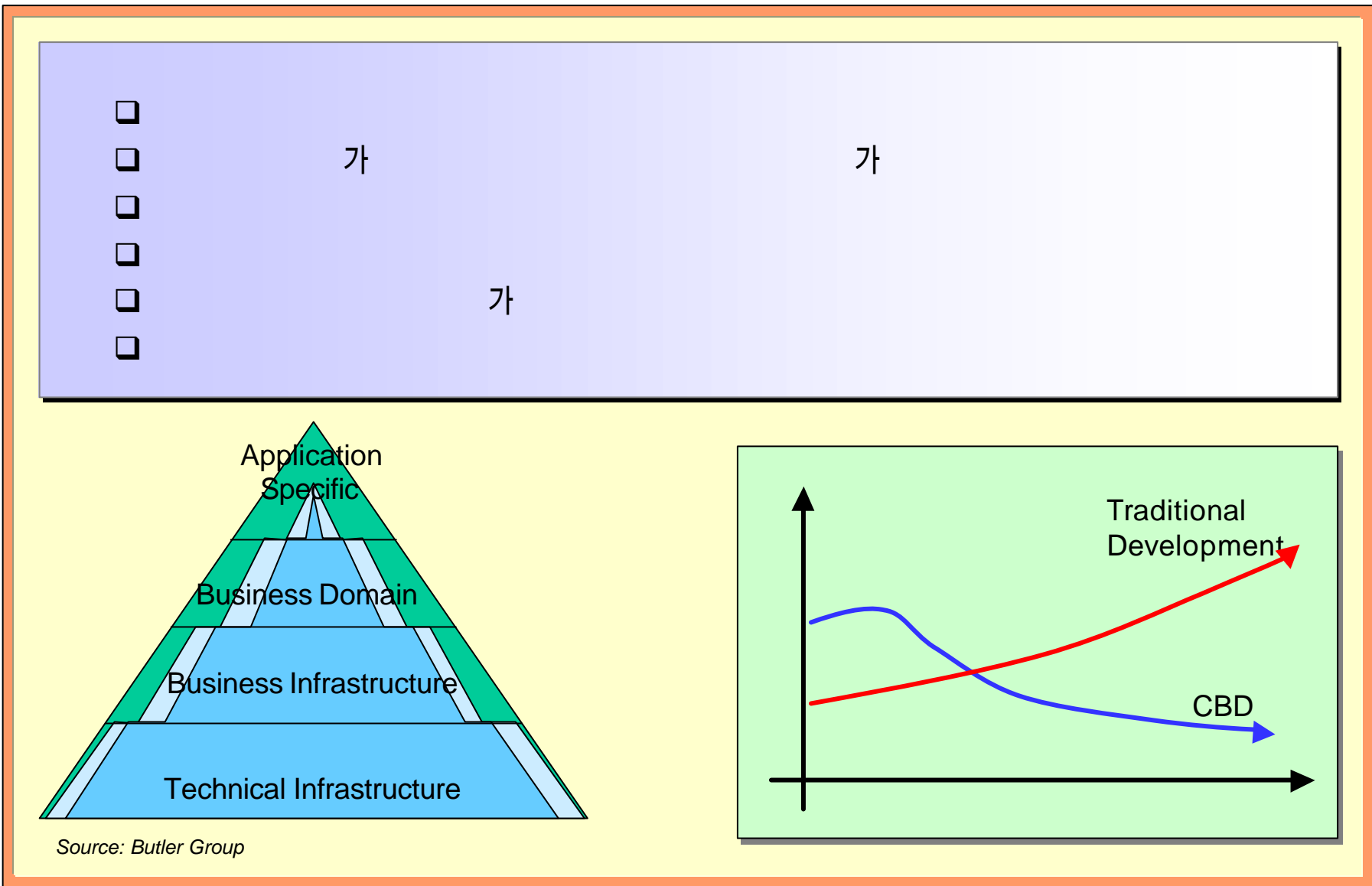
☐ Small and Large grain component

☐ Black-box and White-box

☐ MBD(Model-Base Development)



CBD



HP CBD

RapidCBDi

RapidCBDi Flow



RapidCBDi

❑ RapidCBDi

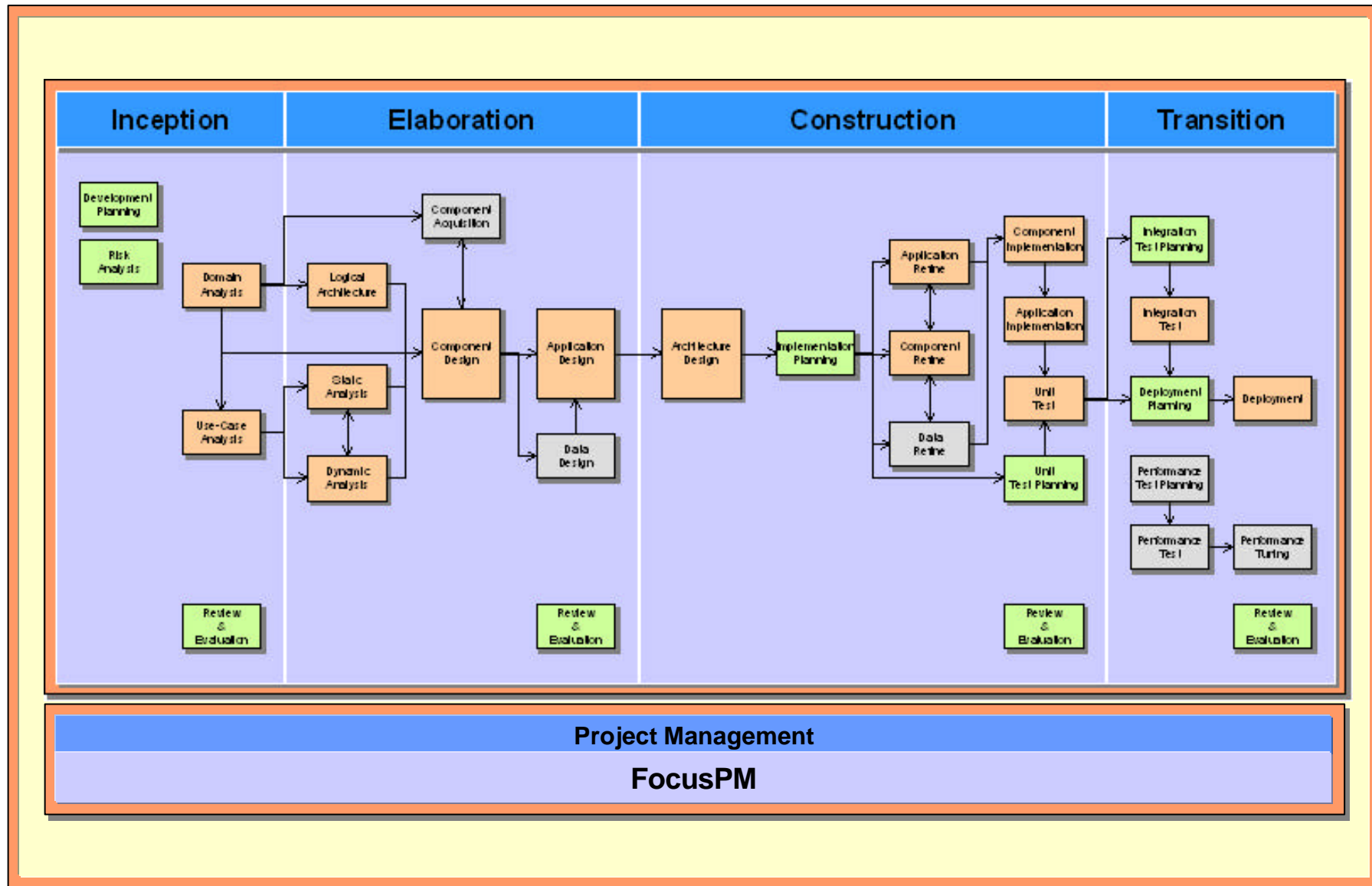
- RapidCBDi Business Application Component Based Development Methodology .
- RapidCBDi CBD .
- RapidCBDi Business Component 가 .

❑ RapidCBDi

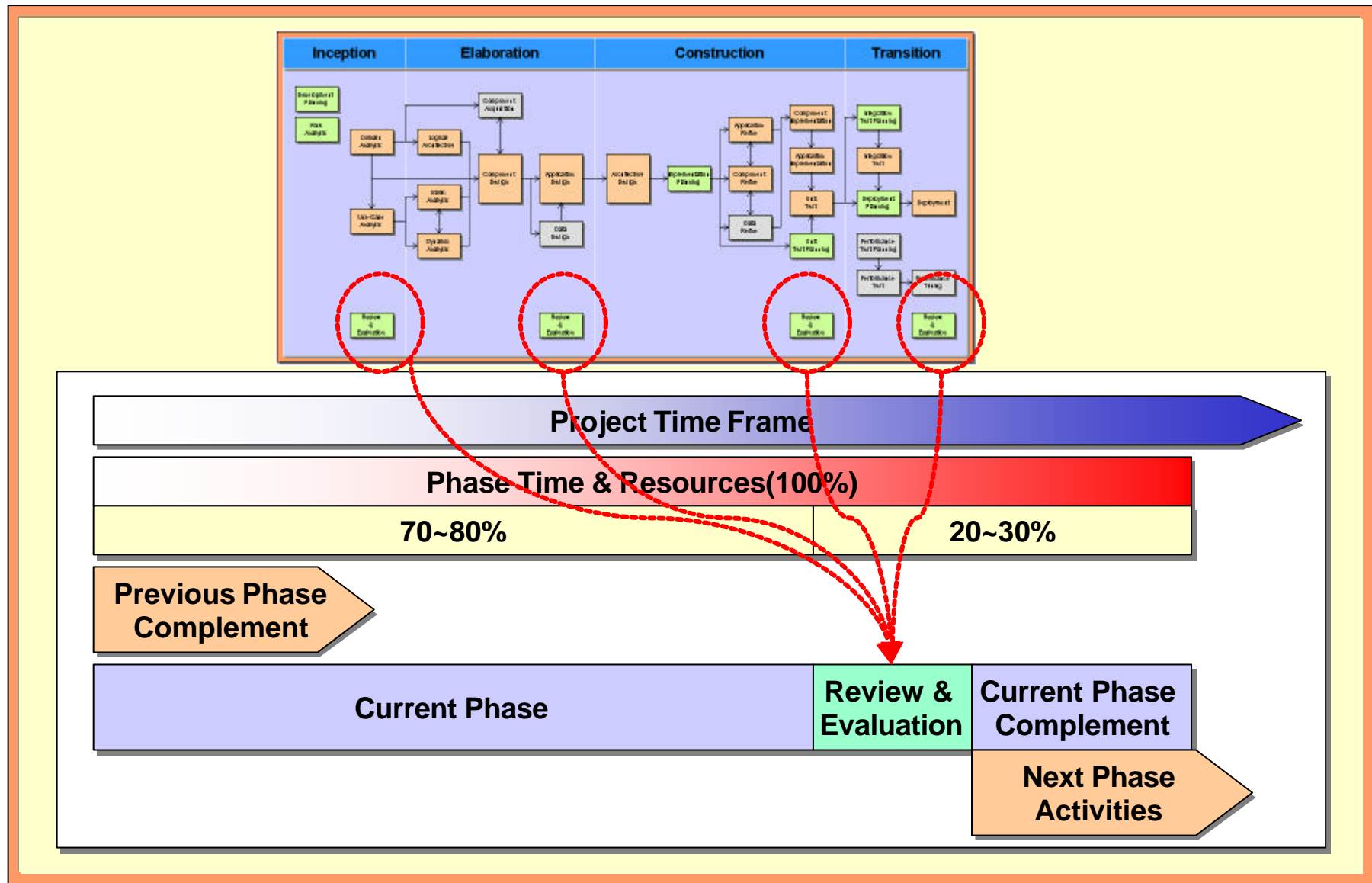
- Practical CBD Methodology
- Easy to perform CBD
- Time to Market
- Low Cost
- High Productivity
- UML
- Platform or Tool Independent
- HP FocusPM



RapidCBDi Flow



Iteration Work



CBD

S CBD

-

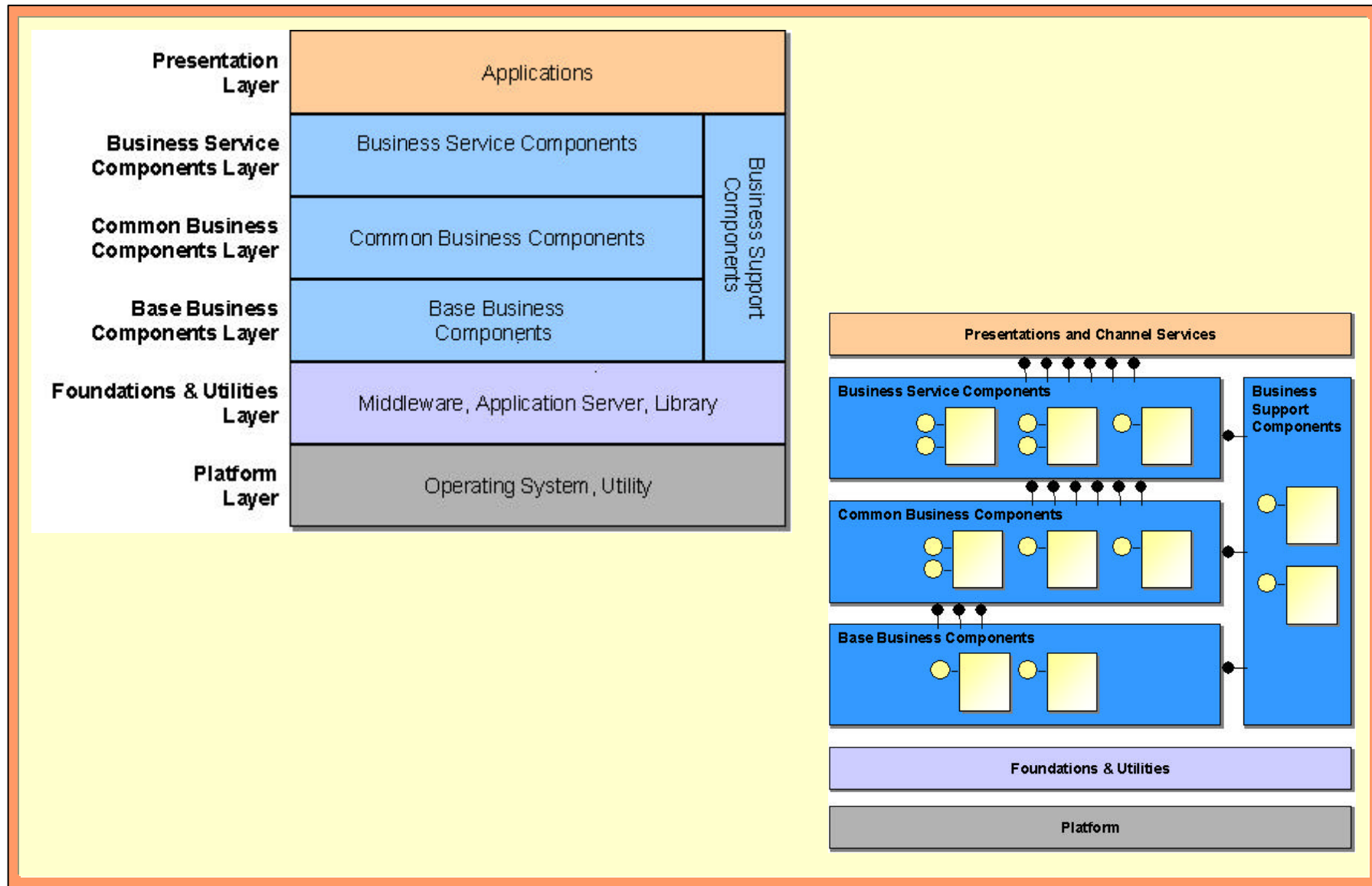
-

-

-



Logical Architecture



Component Refine

Component Specification

AccountMgr

Type	SessionBean (Stateless)
Package	shb.com.common
JNDI Name	Common.AccountMgrHome
Home Interface	AccountMgrHome
Remote Interface	AccountMgr
EJB Class	AccountMgrEJB
Properties	
Methods	doAccountCreation checkAccountForClosing doAccounClosing checkAccountForInterestPayment doInterestPayment getDepositRateByAccount getTaxRateInfo getAccountInfo

Operation Specification

AccountMgr.doAccountCreation

Description

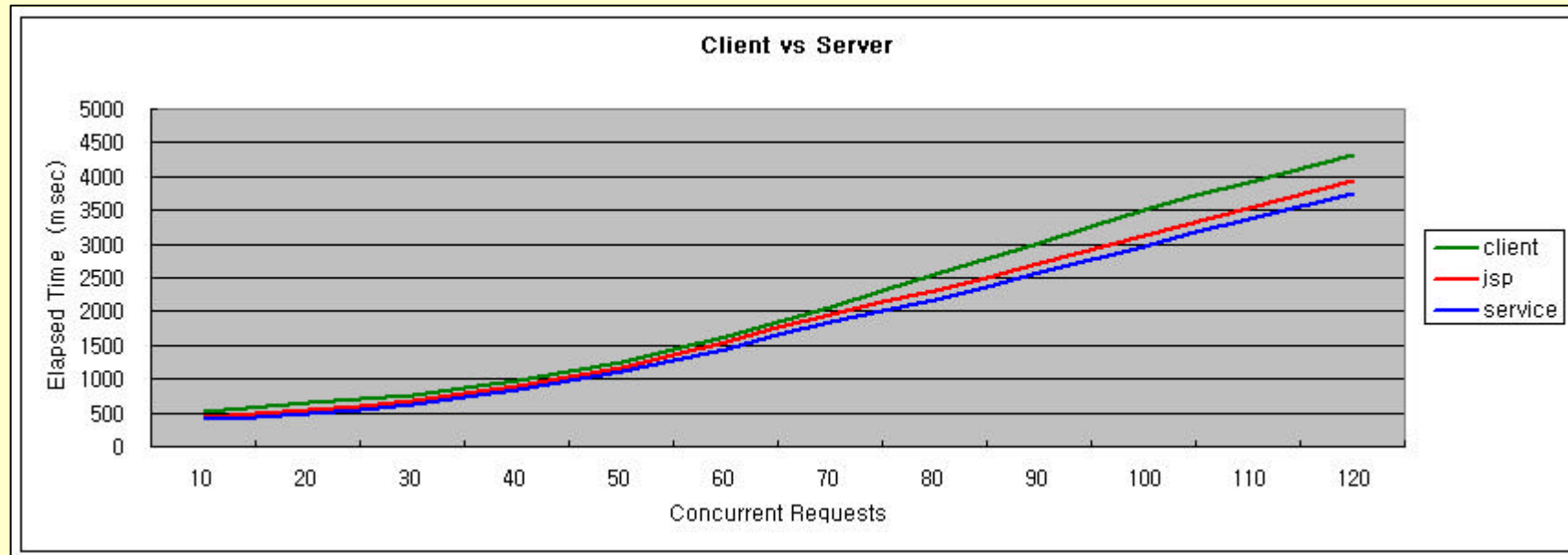
새로운 계좌를 만든다.

Input

HashMap

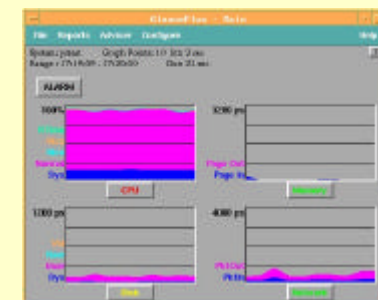
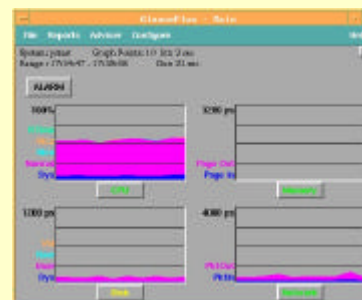
Name	Type	Description
BRANCH_NO	Integer	영업점번호
SAUPBU	Integer	사업부코드
TRANX_DATE	Timestamp	거래일
CUSTOMER_NO	Integer	고객번호
ACCOUNT_PASSWD	Integer	비밀번호
DEPT_CODE	Integer	과목코드
PRODUCT_CODE	Integer	상품코드
DEPOSIT_AMOUNT	Long	금액
DEPOSIT_PERIOD	Integer	기간
PERIOD_UNIT	Integer	기간종류 1 : 년 2 : 개월 3 : 일
INTEREST_PAYMENT_TYPE	Integer	이자지급방법 1 : 월이자지급식 2 : 만기지급식

Performance Test



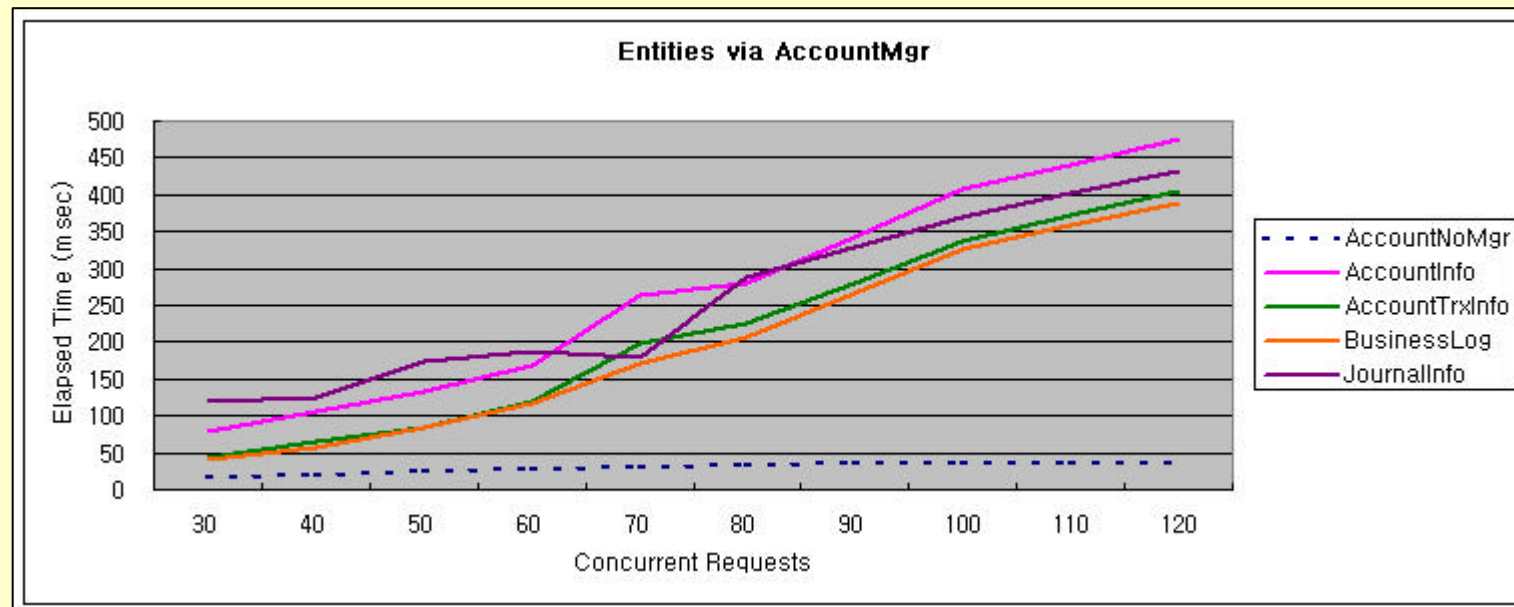
Concurrent Requests	10	20	30	40	50	60	70	80	90	100	110	120	비고
client	511	642	757	973	1246	1627	2069	2552	3029	3506	3909	4312	
jsp	444	535	680	896	1174	1543	1957	2313	2722	3132	3534	3936	
service	410	498	638	841	1102	1448	1842	2187	2580	2974	3363	3753	executeAccountCreation

30,70,100



Performance Test

- Entity Bean JDBC



Concurrent Requests	30	40	50	60	70	80	90	100	110	120	비고
AccountNoMgr	16	18	24	26	30	33	34	36	36	36	class, jdbc, sequence
AccountInfo	79	105	133	169	264	279	343	408	442	475	Entity Bean, insert
AccountTrxInfo	43	64	84	119	199	225	281	338	371	405	Entity Bean, insert
BusinessLog	41	58	83	118	172	206	267	327	358	390	Entity Bean, insert
JournalInfo	119	126	174	188	179	289	329	370	401	432	Entity Bean, insert